

M-15R

M-20R

M-15R: 1,500 Lbs. Maximum
M-20R: 2,000 Lbs. Maximum

The Western Mule M-15R & M-20R Telescoping Boom Cranes are designed and engineered for safety, ease of operation and low maintenance. Enabling you to do your work **faster and safer** while reducing the risk of injury.

STANDARD FEATURES- include a 12V-DC winch powered by the vehicles electric system, and is circuit breaker protected. Controlled by a weatherproof, 10-foot detachable control pendant, powered up and down.



COMPACT- folds and stores below cab height when mounted on a pickup.

LOW MAINTENANCE- environmentally sealed bearings and winch reduces maintenance.

ECONOMICAL- a small equipment investment will increase your efficiency and add value to the vehicle.

VERSATILE- the crane is ideally suited for mounting on pickups, service bodies, flat beds and loading docks. Custom pedestal heights available.

LIGHTWEIGHT- strong, lightweight, and yet requires only a minimum amount of bed space for mounting.



- ▶ 12V-DC Powered
- ▶ 10' Remote Pendant
- ▶ 360° manual rotation
- ▶ Boom Length 52"-72"
- ▶ 15 Position Adjustable Boom
 - 3 Boom Extensions
 - 5 Elevations
- ▶ Powder Coat Finish –Lt Gray
- ▶ 1-Year Warranty

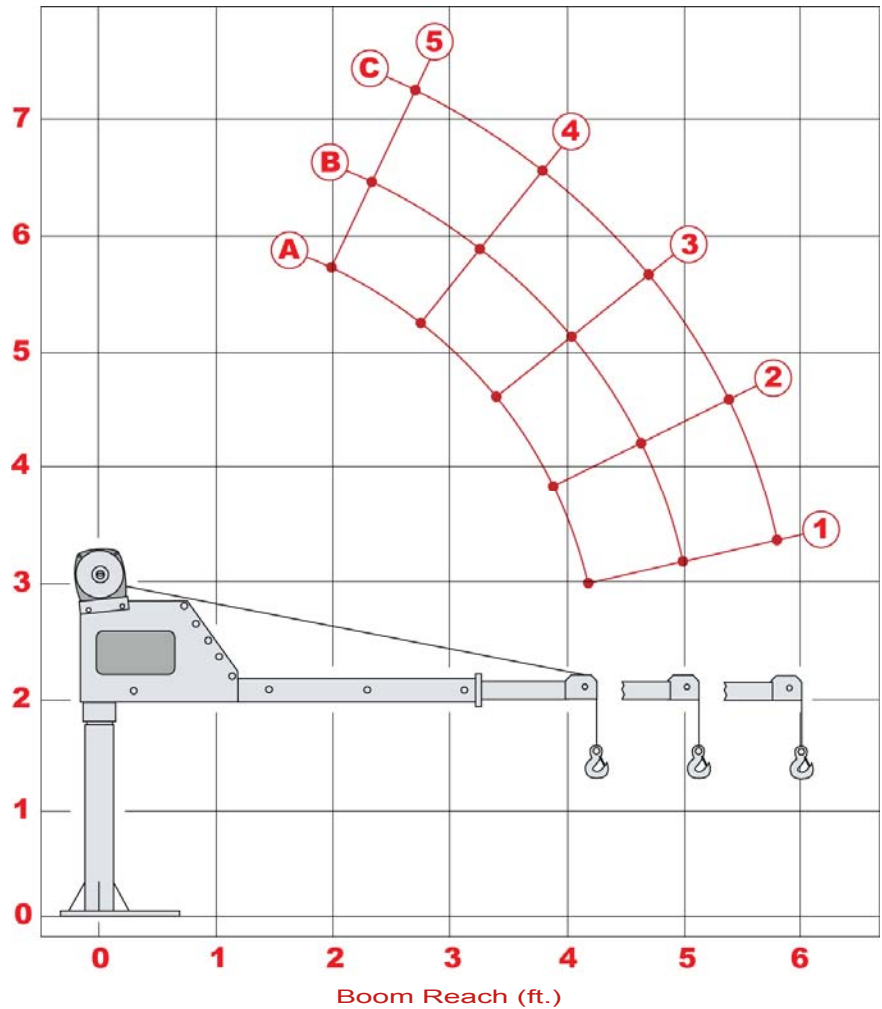
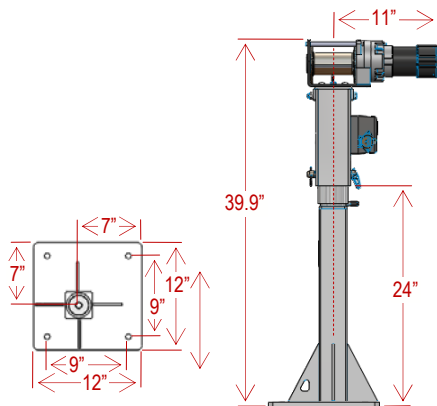


Optional mast heights and custom configurations also available.

OPTIONS

Part #	Description
WO-14	Rotation Lock
WA-26	Boom Rest
WO-34	Fold-Down Adjustable Outrigger
WO-39	Wireless Remote Control
	Optional Stainless Steel Cable
	Optional Cable Length
	Optional Pedestal Height

(Specify when ordering)



Optional pedestal heights, mounting bases, and custom configurations available.

STANDARD FEATURES

MODEL:	M-15R	M-20R
Max. Lifting Capacity	1500 lbs.	2000 lbs.
Winch Power	12V-DC, 80 Amp Max.	12V-DC, 80 Amp Max.
Circuit Breaker	Included	Included
Boom Maximum Reach	72"	72"
Boom Extension	3-Positions	3-Positions
Boom Angles	0°, 20°, 40°, 60°	0°, 20°, 40°, 60°
Rotation	360° Manual	360° Manual
Bearings	3 Bearings	3 Bearings
Lifting Cable	25' x 3/16"	25' x 7/32"
Control	10' Remote (Detachable)	10' Remote (Detachable)
Mounting Base	12" x 12" (9" x 9" Bolt Space)	12" x 12" (9" x 9" Bolt Space)
Finish	Lt. Gray Powder-Coat	Lt. Gray Powder-Coat
Weight of Crane/Ship Weight	190 / 225 lbs.	205 / 235 lbs.
Warranty (excluding lifting cable)	1-Year	1-Year

LOAD CHARTS

M-15R			
Boom Position	A	B	C
5	1500	1350	1065
4	1500	1215	950
3	1250	1045	805
2	1100	865	660
1	950	695	525

M-20R			
Boom Position	A	B	C
5	2000	1800	1420
4	2000	1620	1265
3	1750	1395	1075
2	1500	1155	880
1	1280	995	695

Capacity in Lbs.

We reserve the right under the Product Improvement Policy to change specifications without notice or reference to specification used herein.

R217

WESTERN MULE CRANES 1510 Merced St. Fresno, CA USA
Ph: (800)288-6853, (559)266-6977 ♦ Fax: (559)266-7437 ♦ www.westernmule.com

